



29 Cherry Tree Walk, Beckenham

Guide Price £675,000

CE

CHARLES EDEN

YOU'LL NOTICE THE DIFFERENCE

29 Cherry Tree Walk

Beckenham

Charles Eden are pleased to offer this well-presented three-bedroom terraced house, arranged to provide practical and comfortable family living.

The ground floor comprises a living room, dining room, kitchen and conservatory. The living room and dining room both feature electric fireplaces, with the dining room also providing direct access through to the conservatory. The kitchen wraps around into the conservatory and includes integrated appliances, a double oven and a induction hob.

To the first floor, there are three bedrooms and the main family bathroom, which is fitted with both a bath and separate shower cubicle.

Externally, the rear garden is partly paved and partly laid with faux turf, with mature planting and a well landscaped finish. There is also a single garage and a garden shed. Further benefits include a driveway, gas central heating and plantation shutters throughout.

The property is conveniently located within proximity to Balgowan Primary School and Langley schools, with Beckenham Junction and Eden Park BR stations also nearby.

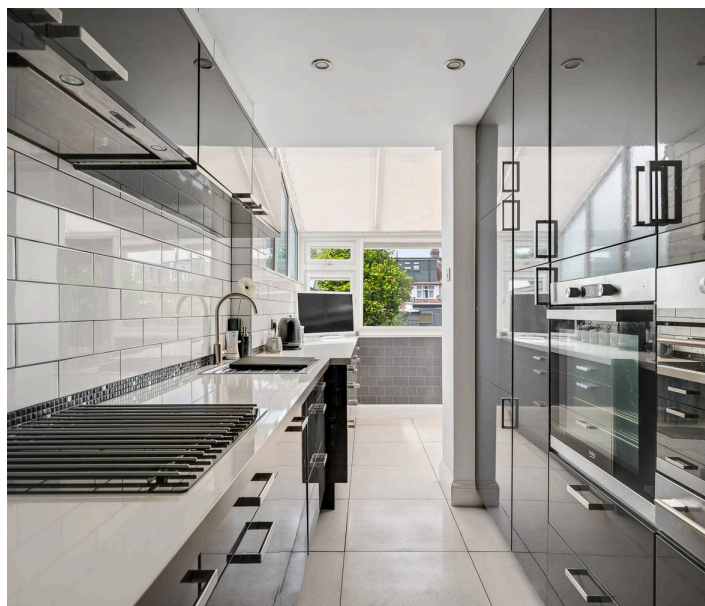
Early viewing is recommended.

Please note that all measurements and lease details are provided for guidance only and should be checked by your solicitor. School catchments and admissions criteria are subject to change and should be confirmed independently.

Council Tax band: E

EPC Energy Efficiency Rating: D

- THREE BEDROOM TERRACED HOUSE
- OFF STREET PARKING
- APPROX 74FT GARDEN



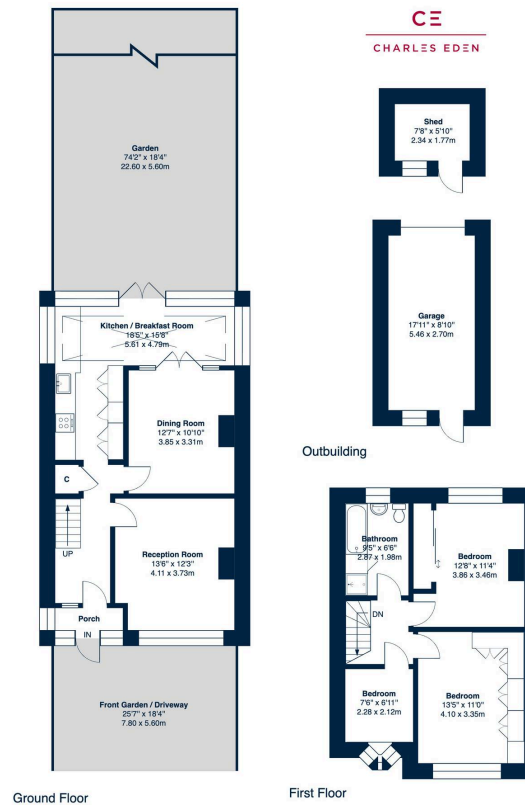


Cherry Tree Walk, BR3

Approximate Gross Internal Area = 1084 sq ft / 100.7 sq m

Outbuildings Area = 203 sq ft / 18.9 sq m

Total Area = 1287 sq ft / 119.6 sq m



This floor plan was produced using RICS measurements standards 2nd edition.
For layout guidance only and not drawn to scale unless stated. Window and door openings are approximate.
Whilst every care is taken in the preparation of this plan, we would advise interested parties to check all dimensions, shapes and compass bearings prior to making any decisions reliant upon them. No liability is accepted for any errors.
By www.primasquarephotography.com / Copyright 2026

Charles Eden

71 High Street, Beckenham, BR3 1AW

T: 02086631964

E: info@charleseden.co.uk

W: charleseden.co.uk



CHARLES EDEN